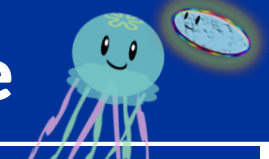


Kamo Aquarium & Yunohama Onsen Bus timetable



Bus stop	Tsuruoka → Kamo Aquarium & Yunohama Onsen dir.														
	Business days only										Weekends & National Holidays only				
S-Mall Bus Terminal Bus stop n°1	Fare	7:15	7:45	8:50	10:40	13:00	14:45	16:00	18:15		8:35	10:40	13:00	14:45	16:00
Tsuruoka Station Bus stop n°2	¥190	7:17	7:47	8:52	10:42	13:02	14:47	16:02	18:17		8:37	10:42	13:02	14:47	16:02
Minami Ginza	¥210	7:23	7:53	8:58	10:48	13:08	14:53	16:08	18:23		8:43	10:48	13:08	14:53	16:08
Tsuruoka City Office	¥210	7:28	7:58	9:03	10:53	13:13	14:58	16:13	18:28		8:48	10:53	13:13	14:58	16:13
Chido Museum	¥270	7:29	7:59	9:04	10:54	13:14	14:59	16:14	18:29		8:49	10:54	13:14	14:59	16:14
Shonai Kankobussankan	¥390			9:13	11:03	13:23	15:08	16:23	18:38		8:58	11:03	13:23	15:08	16:23
Oyama Post Office	¥480	7:39	8:09	9:18	11:08	13:28	15:13	16:28	18:43		9:03	11:08	13:28	15:13	16:28
Kamo Aquarium	¥740	7:47	8:17	9:26	11:16	13:36	15:21	16:36	18:51		9:11	11:16	13:36	15:21	16:36
Yunohama Onsen	¥770	7:58	8:28	9:37	11:27	13:47	15:32	16:47	19:02		9:22	11:27	13:47	15:32	16:47

Bus stop	Yunohama Onsen & Kamo Aquarium → Tsuruoka dir.														
	Business days only										Weekends & National Holidays only				
Yunohama Onsen	Fare	7:10	8:20	9:00	10:05	12:15	14:15	16:00	17:15	19:30	9:50	12:15	14:15	16:00	17:15
Kamo Aquarium	¥310	7:19	8:29	9:09	10:14	12:24	14:24	16:09	17:24	19:39	9:59	12:24	14:24	16:09	17:24
Oyama Post Office	¥490	7:27	8:37	9:17	10:22	12:32	14:32	16:17	17:32	19:47	10:07	12:32	14:32	16:17	17:32
Shonai Kankobussankan	¥650			9:27	10:32	12:42	14:42	16:27	17:42	19:57	10:17	12:42	14:42	16:27	17:42
Chido Museum	¥710	7:39	8:49	9:34	10:39	12:49	14:49	16:34	17:49	20:04	10:24	12:49	14:49	16:34	17:49
Tsuruoka City Office	¥730	7:40	8:50	9:35	10:40	12:50	14:50	16:35	17:50	20:05	10:25	12:50	14:50	16:35	17:50
Honmachi Kawabata doori	¥750	7:44	8:54	9:39	10:44	12:54	14:54	16:39	17:54	20:09	10:29	12:54	14:54	16:39	17:54
Tsuruoka Station Bus stop n°2	¥770	7:50	9:00	9:45	10:50	13:00	15:00	16:45	18:00	20:15	10:35	13:00	15:00	16:45	18:00
S-Mall Bus Terminal Bus stop n°1	¥770	7:52	9:02	9:47	10:52	13:02	15:02	16:47	18:02	20:17	10:37	13:02	15:02	16:47	18:02

The bus operating between December 31st and January 3rd will follow the "Weekends & National Holidays" schedule. Please be aware that according the traffic's situation, the bus might be slightly delayed.

Reminder:

The Aquarium is opened from 9:00 to 17:00 all year round
 The Aquarium is exceptionally opened until 17:30 from July 28th to August 19th
 The reception desk closes 30 minutes before the closure